

TECHNICAL DATA SHEET

VOLTSTREAM Series

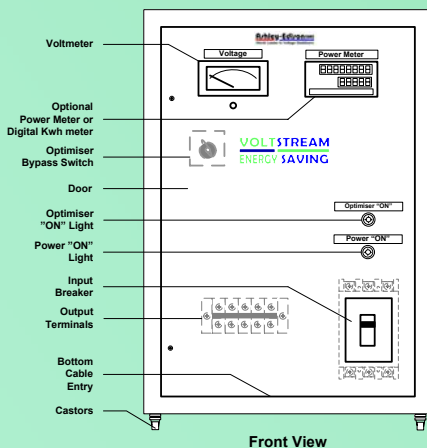
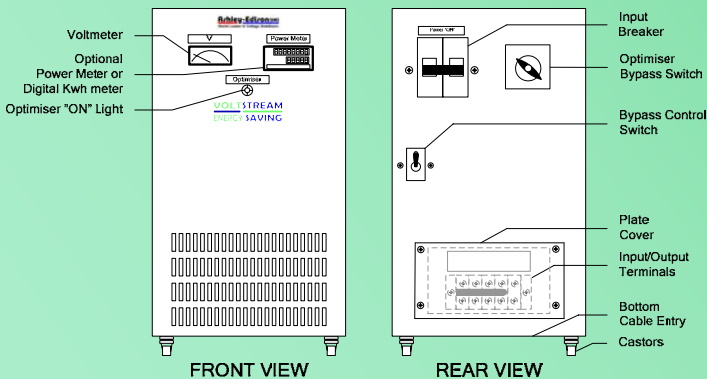
EVS1

Input Voltage Range	187 - 254V Single Phase 2 Wire
Output Voltage	220V Single Phase 2 Wire
Output Voltage Accuracy	+ / - 1%
Frequency	47 to 65 Hz
Efficiency	98%
Power Factor	Any lagging to 0.95 leading
Surge Ratings	10 x max. current rating for 2 seconds 3 x max current rating for 1 minute 2 x max. current rating for 5 minutes
Total Harmonic Distortion	<1%
Digital kW / kW Hr Meter (Option)	Display Red LED (kW) - Display Red LED - kW Hours (kWh)
Digital Power Meter (Option)	Display Red LED (V,A,W,VA,AER,PF) - Display Green LED (kWh) Temperature range -15 to 45°C. Derate by 2% for each additional °c up to max of 60°C. Suitable for indoor tropical use 95% RH (non-condensing). Maximum altitude 1000m. Derate by 2.5% for each additional 500m.
Environment	
Construction	Enclosures to IP20, BS EN5490 / IEC 60529
Conformance	BS EN50081-1;2 / IEC 61000-4-3;4
CE Conformity	EN55022, EN50082-2, ENV50140-1

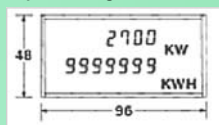
MODELS

VOLTSTREAM Model	Rating kVA	Max. Output Amps	Dimensions (mm) W x H x D	Weight (Kg)
EVS1-20H	4.4	20	270 x 460 x 490	51
EVS1-32H	8	32	270 x 460 x 490	55
EVS1-45H	10	45	270 x 460 x 490	55
EVS1-63H	14	63	400 x 580 x 500	75
EVS1-100H	22	100	500 x 700 x 600	116
EVS1-200H	44	200	500 x 900 x 600	147

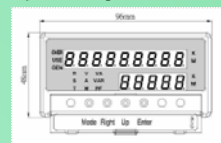
Copyright © 2010 Ashley-Edison reserve the right to change any or all of the specifications indicated or implied without prior notice.



Optional: Digital Hour Meter



Optional: Digital Power Meter



Model EVS1-20H ~ 63H are supplied with Input Breaker, Input/Output Terminals, Output Voltmeter, Optimiser Bypass Switch and Castors.

Model EVS1-100H ~ 200H are supplied with Input Breaker, Input/Output Terminals, Output Voltmeter, Optimiser Bypass Switch and Castors.

EVS1

INDOOR

Single Phase



Supply	Single Phase 2 Wire
Rating	20 - 200 Amps 4.4 - 44 kVA
No. of Models	6

Features & Protection

Automatic Voltage Optimisation	✓
Voltage Surge & Spike Protection	✓
Tight Output Voltage Accuracy	✓
High Overload Capability	✓
Start Up Load Protection	✓
Input Circuit Breaker	✓
Inbuilt Manual Bypass Facility	✓
Over / Low Voltage Protection	⊙
Lightning Surge Protection	⊙
Output Circuit Breaker	⊙

System Metering:

Operational Status Indication	✓
Output Volt Meter	✓
Digital kW / kW Hour Meter	⊙
Digital Power Meter	⊙
Over/ Low Voltage Contacts	⊙

KEY ✓ Standard ⊙ Optional

